

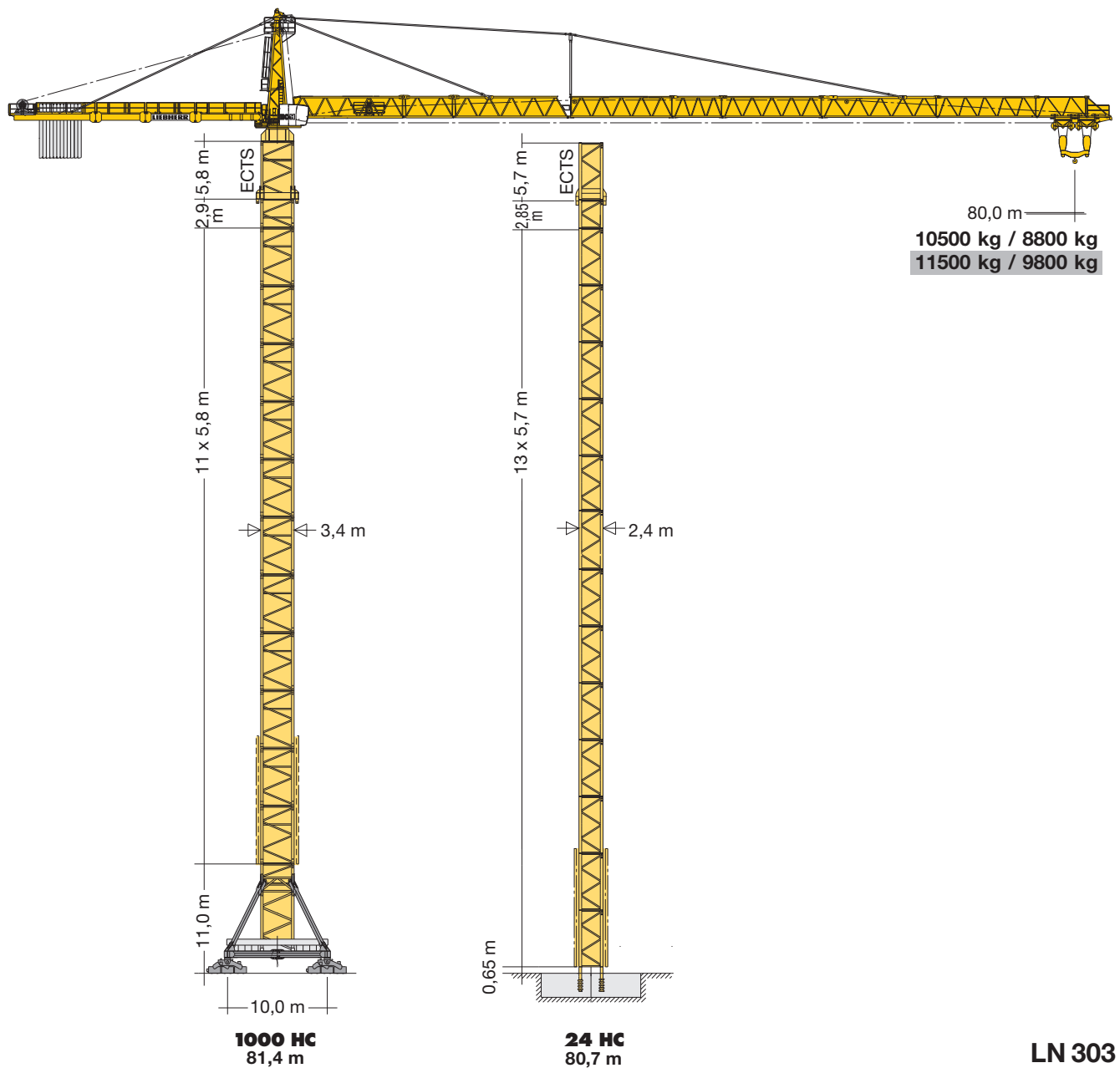
Turmdrehkran

Tower Crane / Grue à tour / Gru a torre / Grúa torre
Guindaste de torre / Башенный поворотный кран

1000 EC-H 40 Litronic®

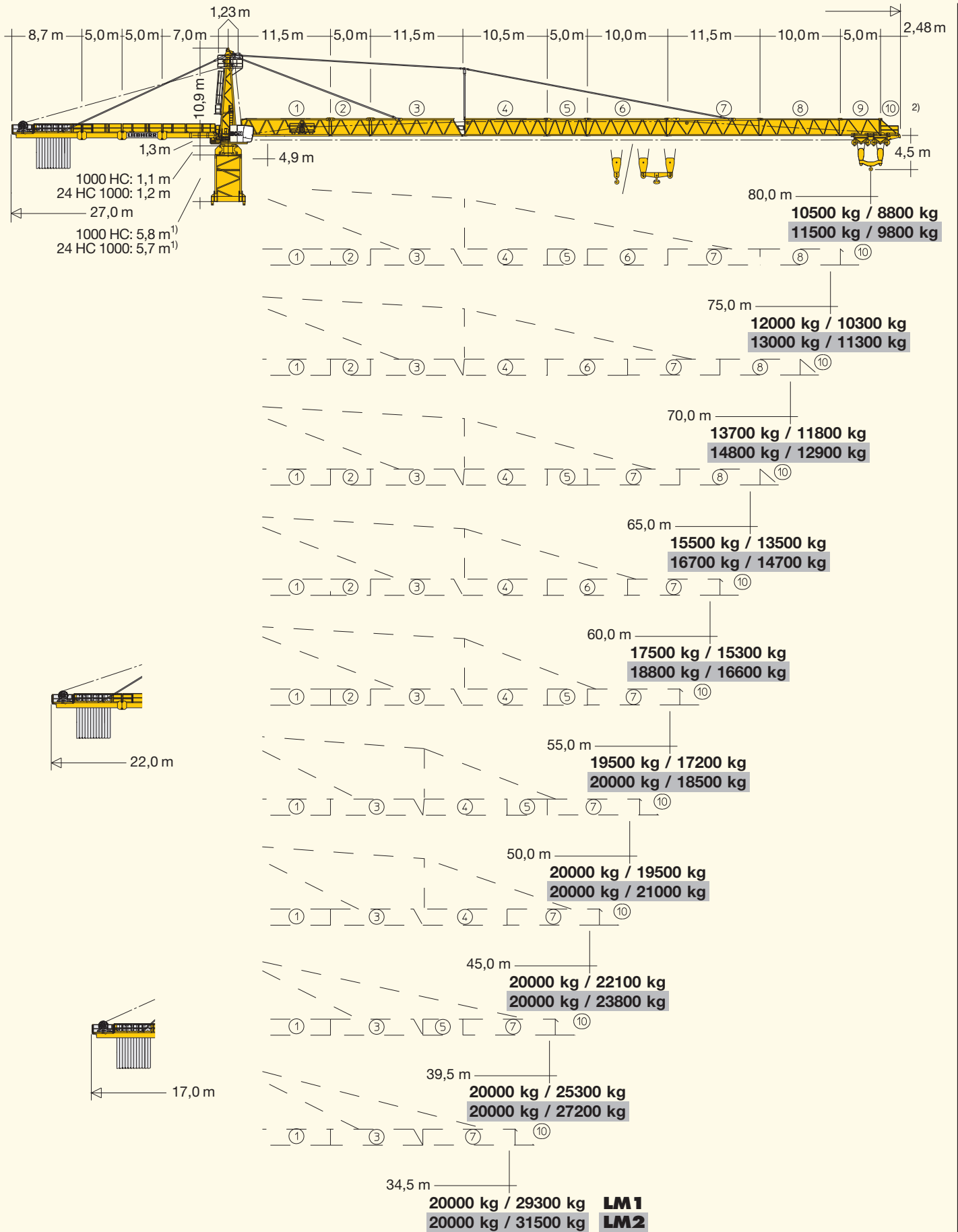
▶ 1000 EC-H 40 Litronic®

▶ 1000 EC-H 50 Litronic®



LN 303

LIEBHERR




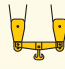
¹⁾ Turmstück oder Kletterturmstück. / Tower section or climbing tower section. / Élément de mât ou élément de mât télescopable. / Elemento torre oppure elemento torre telescopabile. / Tramo torre o tramo torre trepable. / Segmento de torre ou segmento de torre para ascensão. / Башенная секция или секция наращивания.

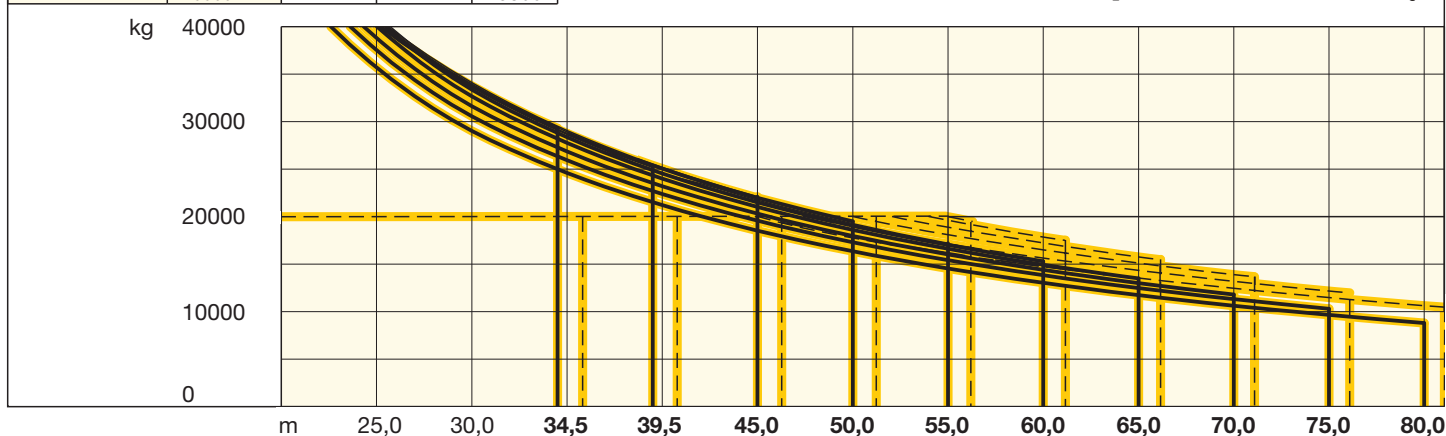
²⁾ Weitere Auslegerlängen auf Anfrage. / Other jib lengths available to order. / Autres longueurs de flèche sur demande. / Altre lunghezze braccio su richiesta. / Otras longitudes de pluma a petición. / Possibilidade de fornecimento de outros alcances a pedido. / Другие длины стрелы – по запросу.

Ausladung und Tragfähigkeit

Radius and capacity / Portée et charge / Sbraccio e portata
Alcances y cargas / Alcance e capacidade de carga / Вылет и грузоподъемность

|  m r | | m/kg | 1000 EC-H 40 | | | | | | | | | | | |
|--|-------------------|-------|--------------|------------------------|------------------------|------------------------|------------------------|------------------------|------------------------|------------------------|------------------------|------------------------|-------|--------------|
| | | | 25,0 | 30,0 | 35,0 | 40,0 | 45,0 | 50,0 | 55,0 | 60,0 | 65,0 | 70,0 | 75,0 | 81,4 |
| 81,4 (r = 83,7) | 6,1-45,1 20000 | 20000 | 20000 | 20000 | 20000 | 20000 | 20000 | 17990 | 16260 | 14810 | 13560 | 12480 | 11540 | 10500 |
| 76,4 (r = 78,7) | 6,1-47,7 20000 | 20000 | 20000 | 20000 | 20000 | 20000 | 19030 | 17210 | 15680 | 14380 | 13240 | 76,4 m 12000 | | |
| 71,4 (r = 73,7) | 6,1-50,2 20000 | 20000 | 20000 | 20000 | 20000 | 20000 | 20000 | 18170 | 16560 | 15190 | 71,4 m 13700 | | | |
| 66,4 (r = 68,7) | 6,1-52,2 20000 | 20000 | 20000 | 20000 | 20000 | 20000 | 20000 | 18950 | 17290 | 66,4 m 15500 | | | | |
| 61,4 (r = 63,7) | 6,1-54,1 20000 | 20000 | 20000 | 20000 | 20000 | 20000 | 20000 | 19660 | 61,4 m 17500 | | | | | |
| 56,4 (r = 58,7) | 6,1-55,1 20000 | 20000 | 20000 | 20000 | 20000 | 20000 | 20000 | 56,4 m 19500 | | | | | | |
| 51,4 (r = 53,7) | 6,1-51,4 20000 | 20000 | 20000 | 20000 | 20000 | 20000 | 51,4 m 20000 | | | | | | | |
| 46,4 (r = 48,7) | 6,1-46,4 20000 | 20000 | 20000 | 20000 | 20000 | 46,4 m 20000 | | | | | | | | |
| 40,9 (r = 43,2) | 6,1-40,9 20000 | 20000 | 20000 | 20000 | 40,9 m 20000 | | | | | | | | | |
| 35,9 (r = 38,2) | 6,1-35,9 20000 | 20000 | 20000 | 35,9 m 20000 | | | | | | | | | | |

|  m r | | m/kg | LM 1 | | | | | | | | | | |
|--|-------------------|-------|-------|------------------------|------------------------|--------------|--------------|--------------|--------------|--------------|--------------|--------------|-------------|
| | | | 25,0 | 30,0 | 35,0 | 40,0 | 45,0 | 50,0 | 55,0 | 60,0 | 65,0 | 70,0 | 75,0 |
| 80,0 (r = 83,7) | 4,9-22,6 40000 | 35690 | 29020 | 24600 | 21210 | 18530 | 16350 | 14550 | 13030 | 11740 | 10630 | 9660 | 8800 |
| 75,0 (r = 78,7) | 4,9-23,6 40000 | 37520 | 30550 | 25930 | 22380 | 19580 | 17300 | 15420 | 13830 | 12480 | 11320 | 10300 | |
| 70,0 (r = 73,7) | 4,9-24,3 40000 | 38800 | 31620 | 26860 | 23200 | 20310 | 17970 | 16030 | 14390 | 13000 | 11800 | | |
| 65,0 (r = 68,7) | 4,9-25,0 40000 | 40000 | 32650 | 27750 | 23990 | 21020 | 18610 | 16610 | 14930 | 13500 | | | |
| 60,0 (r = 63,7) | 4,9-25,5 40000 | 40000 | 33360 | 28360 | 24530 | 21500 | 19040 | 17010 | 15300 | | | | |
| 55,0 (r = 58,7) | 4,9-25,7 40000 | 40000 | 33690 | 28650 | 24790 | 21730 | 19250 | 17200 | | | | | |
| 50,0 (r = 53,7) | 4,9-25,5 40000 | 40000 | 33940 | 28910 | 25050 | 21990 | 19500 | | | | | | |
| 45,0 (r = 48,7) | 4,9-25,6 40000 | 40000 | 34100 | 29060 | 25180 | 22100 | | | | | | | |
| 39,5 (r = 43,2) | 4,9-25,2 40000 | 40000 | 33670 | 28750 | 39,5 m 25300 | | | | | | | | |
| 34,5 (r = 38,2) | 4,9-25,2 40000 | 40000 | 33760 | 34,5 m 29300 | | | | | | | | | |



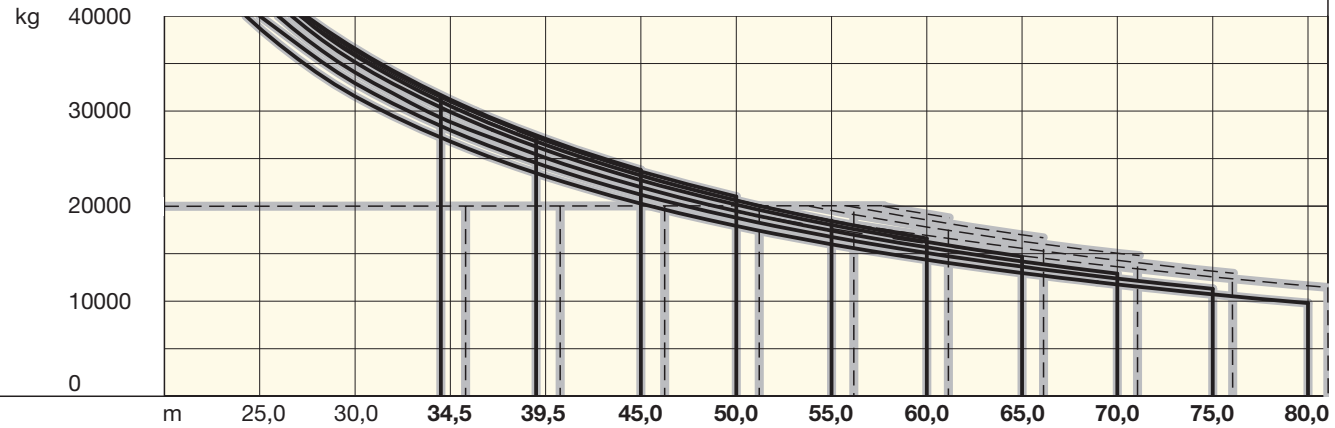
Ausladung und Tragfähigkeit

Radius and capacity / Portée et charge / Sbraccio e portata
Alcances y cargas / Alcance e capacidade de carga / Вылет и грузоподъемность

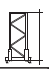
| | | 1000 EC-H 40 Litronic® | | | | | | | | | | | | |
|------|------------|------------------------|-------|-------|-----------------|-----------------|-----------------|-----------------|-----------------|-----------------|-----------------|-----------------|-----------------|-------|
| | | m/kg | | | | | | | | | | | | |
| m | r | m/kg | 25,0 | 30,0 | 35,0 | 40,0 | 45,0 | 50,0 | 55,0 | 60,0 | 65,0 | 70,0 | 75,0 | 81,4 |
| 81,4 | (r = 83,7) | 6,1-49,0 20000 | 20000 | 20000 | 20000 | 20000 | 20000 | 19570 | 17710 | 16140 | 14800 | 13640 | 12620 | 11500 |
| 76,4 | (r = 78,7) | 6,1-51,2 20000 | 20000 | 20000 | 20000 | 20000 | 20000 | 20000 | 18580 | 16940 | 15540 | 14330 | 76,4 m 13000 | |
| 71,4 | (r = 73,7) | 6,1-53,9 20000 | 20000 | 20000 | 20000 | 20000 | 20000 | 20000 | 19570 | 17860 | 16390 | 71,4 m 14800 | | |
| 66,4 | (r = 68,7) | 6,1-56,0 20000 | 20000 | 20000 | 20000 | 20000 | 20000 | 20000 | 20000 | 18610 | 66,4 m 16700 | | | |
| 61,4 | (r = 63,7) | 6,1-57,9 20000 | 20000 | 20000 | 20000 | 20000 | 20000 | 20000 | 20000 | 61,4 m 18800 | | | | |
| 56,4 | (r = 58,7) | 6,1-56,4 20000 | 20000 | 20000 | 20000 | 20000 | 20000 | 20000 | 56,4 m 20000 | | | | | |
| 51,4 | (r = 53,7) | 6,1-51,4 20000 | 20000 | 20000 | 20000 | 20000 | 20000 | 51,4 m 20000 | | | | | | |
| 46,4 | (r = 48,7) | 6,1-46,4 20000 | 20000 | 20000 | 20000 | 20000 | 46,4 m 20000 | | | | | | | |
| 40,9 | (r = 43,2) | 6,1-40,9 20000 | 20000 | 20000 | 20000 | 40,9 m 20000 | | | | | | | | |
| 35,9 | (r = 38,2) | 6,1-35,9 20000 | 20000 | 20000 | 35,9 m 20000 | | | | | | | | | |


| | | m/kg | | | | | | | | | | | | |
|------|------------|-------------------|-------|-------|-----------------|-----------------|-------|-------|-------|-------|-------|-------|-------|------|
| m | r | m/kg | 25,0 | 30,0 | 35,0 | 40,0 | 45,0 | 50,0 | 55,0 | 60,0 | 65,0 | 70,0 | 75,0 | 80,0 |
| 80,0 | (r = 83,7) | 4,9-24,3 40000 | 38710 | 31540 | 26790 | 23140 | 20260 | 17920 | 15980 | 14350 | 12960 | 11760 | 10720 | 9800 |
| 75,0 | (r = 78,7) | 4,9-25,2 40000 | 40000 | 32920 | 27980 | 24200 | 21200 | 18770 | 16760 | 15070 | 13630 | 12390 | 11300 | |
| 70,0 | (r = 73,7) | 4,9-26,0 40000 | 40000 | 34060 | 28970 | 25070 | 21990 | 19480 | 17410 | 15670 | 14180 | 12900 | | |
| 65,0 | (r = 68,7) | 4,9-26,7 40000 | 40000 | 35130 | 29900 | 25890 | 22720 | 20150 | 18020 | 16230 | 14700 | | | |
| 60,0 | (r = 63,7) | 4,9-27,2 40000 | 40000 | 35840 | 30520 | 26440 | 23210 | 20590 | 18420 | 16600 | | | | |
| 55,0 | (r = 58,7) | 4,9-27,2 40000 | 40000 | 35980 | 30640 | 26540 | 23300 | 20670 | 18500 | | | | | |
| 50,0 | (r = 53,7) | 4,9-27,3 40000 | 40000 | 36340 | 31000 | 26900 | 23640 | 21000 | | | | | | |
| 45,0 | (r = 48,7) | 4,9-27,4 40000 | 40000 | 36570 | 31200 | 27070 | 23800 | | | | | | | |
| 39,5 | (r = 43,2) | 4,9-27,0 40000 | 40000 | 36100 | 30870 | 39,5 m 27200 | | | | | | | | |
| 34,5 | (r = 38,2) | 4,9-27,1 40000 | 40000 | 36250 | 34,5 m 31500 | | | | | | | | | |

LM2



LM 2 Abweichende Geschwindigkeiten und Betriebsbedingungen. / Variant speeds and service conditions. / Vitesses et conditions de fonctionnement différentes. / Differenti velocità e condizioni di funzionamento. / Otras velocidades y características de funcionamiento. Outras velocidades e características de funcionamento. / Нестандартные скорости и условия эксплуатации.

| 5,7 m + 2,85 m | | LN 303 | | 24 HC | | 5,8 m + 2,9 m | | LN 303 | | 1000 HC | |
|----------------------|--|-----------------------|--|-------|--------|---------------------|--|--------------------|--|--------------------|--------------------|
| |  | | | | | | | | | | |
| 13 | 13 + 1 | 80,7 ^{8) 3)} | | 13 | 13 + 1 | — | | — | | — | |
| | 12 + 1 | 77,9 ^{7) 3)} | | | 12 + 1 | — | | — | | — | |
| 12 | | 75,0 ^{6) 3)} | | 12 | | — | | — | | — | |
| | 11 + 1 | 72,2 ^{5) 3)} | | | 11 + 1 | 70,8 ³⁾ | | — | | — | 81,4 ³⁾ |
| 11 | | 69,3 ^{4) 3)} | | 11 | | 67,9 ³⁾ | | 79,7 ³⁾ | | — | 78,5 ³⁾ |
| | 10 + 1 | 66,5 ³⁾ | | | 10 + 1 | 65,0 ³⁾ | | 76,8 ³⁾ | | 88,4 ³⁾ | 75,6 ³⁾ |
| 10 | | 63,6 ³⁾ | | 10 | | 62,1 | | 73,9 ³⁾ | | 85,5 ³⁾ | 72,7 |
| | 9 + 1 | 60,8 ³⁾ | | | 9 + 1 | 59,2 | | 71,0 | | 82,6 ³⁾ | 69,8 |
| 9 | | 57,9 ³⁾ | | 9 | | 56,3 | | 68,1 | | 79,7 | 66,9 |
| | 8 + 1 | 55,1 | | | 8 + 1 | 53,4 | | 65,2 | | 76,8 | 64,0 |
| 8 | | 52,2 | | 8 | | 50,5 | | 62,3 | | 73,9 | 61,1 |
| | 7 + 1 | 49,4 | | | 7 + 1 | 47,6 | | 59,4 | | 71,0 | 58,2 |
| 7 | | 46,5 | | 7 | | 44,7 | | 56,5 | | 68,1 | 55,3 |
| | 6 + 1 | 43,7 | | | 6 + 1 | 41,8 | | 53,6 | | 65,2 | 52,4 |
| 6 | | 40,8 | | 6 | | 38,9 | | 50,7 | | 62,3 | 49,5 |
| | 5 + 1 | 38,0 | | | 5 + 1 | 36,0 | | 47,8 | | 59,4 | 46,6 |
| 5 | | 35,1 | | 5 | | 33,1 | | 44,9 | | 56,5 | 43,7 |
| | 4 + 1 | 32,3 | | | 4 + 1 | 30,2 | | 42,0 | | 53,6 | 40,8 |
| 4 | | 29,4 | | 4 | | 27,3 | | 39,1 | | 50,7 | 37,9 |
| | 3 + 1 | 26,6 | | | 3 + 1 | 24,4 | | 36,2 | | 47,8 | 35,0 |
| 3 | | 23,7 | | 3 | | 21,5 | | 33,3 | | 44,9 | 32,1 |
| | 2 + 1 | 20,9 | | | 2 + 1 | 18,6 | | 30,4 | | 42,0 | 29,2 |
| 2 | | 18,0 | | 2 | | 15,7 | | 27,5 | | 39,1 | 26,3 |
| | 1 + 1 | 15,2 | | | 1 + 1 | 12,8 | | 24,6 | | 36,2 | 23,4 |
| 1 | | 12,3 | | 1 | | 9,9 | | 21,7 | | 33,3 | 20,5 |
| | 0 + 1 | 9,5 | | | 0 + 1 | 7,0 | | 18,8 | | 30,4 | 17,6 |
| 0 | | 6,6 | | 0 | | 4,1 | | 15,9 | | 27,5 | 14,7 |
| | | 3,8 | | | | | | | | | |

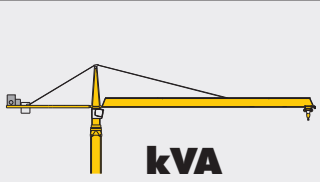
³⁾  ⁴⁾ 2 x TS 24 HC 1250 (5,7 m), ⁵⁾ 3 x TS 24 HC 1250 (5,7 m), ⁶⁾ 4 x TS 24 HC 1250 (5,7 m), ⁷⁾ 5 x TS 24 HC 1250 (5,7 m), ⁸⁾ 6 x TS 24 HC 1250 (5,7 m), ⁹⁾ ECTS = 5,7 m

Turmstücke 24 HC 1250 müssen am Turmfuß eingebaut werden. Details siehe Bedienungsanleitung. / Tower sections 24 HC 1250 must be installed on the tower base. See operating manual for further details. / Les éléments de mât 24 HC 1250 doivent être montés en pied de grue. Voir les détails dans les instructions d'emploi. / Elementi torre 24 HC 1250 devono essere montati alla base torre. Si veda il manuale istruzioni per i dettagli. / Los tramos torre de la 24 HC 1250 tienen que ser montados en el pie de torre. Más detalles en las instrucciones de montaje. / Segmentos de torre 24 HC 1250 devem ser instalados sobre o segmento base. Para mais detalhes consultar manual de instrução. / Башенные секции 24 HC 1250 должны монтироваться в основании башни. Подробную информацию смотри в инструкции по эксплуатации.

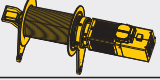


Weitere Hubhöhen, Auslegerlängen sowie Klettern im Gebäude auf Anfrage. / Further hoist heights and jib lengths as well as climbing inside the building on request. / Autres hauteurs sous crochet et longueurs de flèche ainsi que hissage dans le bâtiment sur demande. / Ulteriori altezze gancho, lunghezze braccio così come telescopaggio all'interno dell'edificio: su richiesta. / Para alturas bajo gancho superiores, otros alcances y trepado en el interior del edificio, consultar. / Outras alturas de elevação, comprimentos de lança e subida no edifício: sob consulta. / Другие высоты подъема, длины стрелы и самоподъем в здании – по запросу.

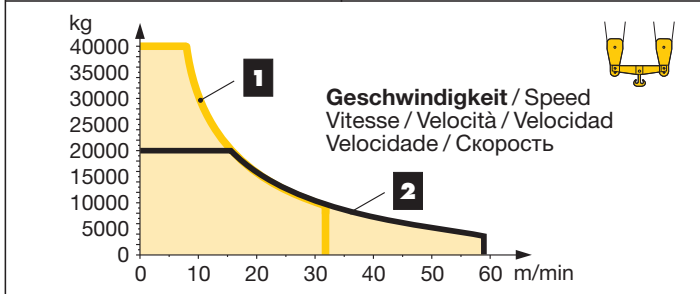
Antriebe Litronic®

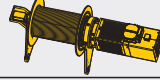


Driving units / Mécanismes d'entraînement / Meccanismi / Mecanismos / Mecanismos / Приводы

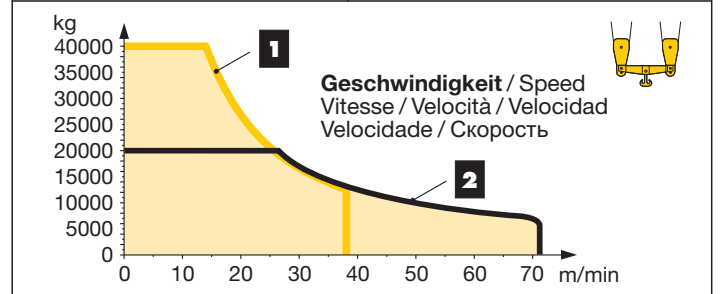
| | | |
|--|----------|-----------|
|  <p>kVA</p> | 65 kW FU | 110 kW FU |
| | 115,0 | 151,0 |




Litronic®: kVA reduzierbar bei zu geringer Netz-Anschlussleistung, siehe BAL. / kVA can be reduced in case of too little power of the mains, see instruction manual. / kVA peut être réduit en cas de trop faible puissance du réseau, voir manuel d'instruction. / kVA riducibili in caso di potenza di rete ridotta (si veda manuale uso e manutenzione) / kVA variable para potencia de red demasiado pequeña, ver Manual de instrucciones. / kVA reduzível no caso de capacidade da rede elétrica muito baixa, ver manual de instruções. / Количество кВА может быть сокращено до минимальной общей потребляемой мощности, см. инструкцию по эксплуатации.

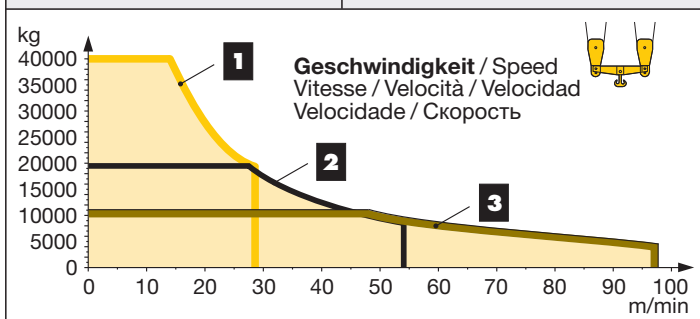
| | |
|---|--|
|  | ↔ stufenlos / stepless / régl. continu / regl. progressiva / sin escalones / sem degraus / бесступенчатый kg m/min kg m/min |
| 65 kW FU [SD.shift] WIW 280 WZ 403 5 Lagen Layers Couches Avvolgimenti Camadas Capas Слоёв 183,0 m / 92,0 m max. 368,0 m / 184,0 m ¹⁰⁾ |   1 20000 0 ↔ 16 40000 0 ↔ 8 4500 0 ↔ 63 9300 0 ↔ 32 2 9600 0 ↔ 32 20000 0 ↔ 16 1500 0 ↔ 117 4000 0 ↔ 59 |

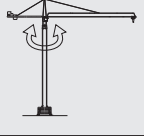




| | |
|--|---|
|  | ↔ stufenlos / stepless / régl. continu / regl. progressiva / sin escalones / sem degraus / бесступенчатый kg m/min kg m/min |
| 110 kW FU [SD.shift] WIW 300 WZ 403 5 Lagen Layers Couches Avvolgimenti Camadas Capas Слоёв 183,0 m / 92,0 m max. 368,0 m / 184,0 m ¹⁰⁾ |   1 20000 0 ↔ 26 40000 0 ↔ 13 5700 0 ↔ 84 12000 0 ↔ 38 2 10000 0 ↔ 52 20000 0 ↔ 26 2800 0 ↔ 142 6000 0 ↔ 71 |



| | |
|--|---|
|  | ↔ stufenlos / stepless / régl. continu / regl. progressiva / sin escalones / sem degraus / бесступенчатый kg m/min kg m/min |
| 110 kW FU WIW 300 VZ 432 5 Lagen Layers Couches Avvolgimenti Camadas Capas Слоёв 202,0 m / 101,0 m max. 520,0 m / 260,0 m ¹⁰⁾ |   1 20000 0 ↔ 28 40000 0 ↔ 14 9300 0 ↔ 56 18800 0 ↔ 28 2 9800 0 ↔ 53 19700 0 ↔ 27 4200 0 ↔ 107 8800 0 ↔ 54 3 4900 0 ↔ 95 10100 0 ↔ 48 1500 0 ↔ 194 4000 0 ↔ 97 |



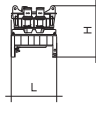
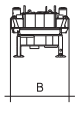
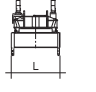
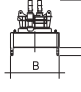
| | | |
|---|----------------------------|----------------|
|  | 0 ↔ 0,6 sl./min tr./min | 3 x 11,0 kW FU |
|  | 0 ↔ 70,0 m/min | 11,0 kW FU |
|  | 25,0 m/min | 6 x 7,5 kW |

¹⁰⁾ **Weitere Hublastdaten: siehe Betriebsanleitung.** / Further hoist load data: see instruction manual. / Autres données de la charge de levage: voir manuel d'instruction. / Altri dati sui carichi sollevati: consultare il manuale d'istruzione. / Alturas bajo grancho superiores según manual. / Outras tabelas de carga: consultar manual de instruções. / Другие данные по весу поднимаемых грузов: см. инструкцию по эксплуатации.

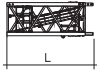
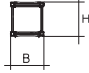
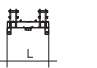
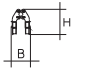
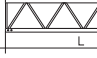
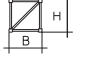
Kolli-Liste

Packing List / Liste de colisage / Lista dei colli
Lista de contenido / Lista de embalagem / Упаковочный лист

Montagegewichte: siehe Betriebsanleitung. / Erection weights: see instruction manual. / Poids de montage: voir manuel de service. / Pesì di montaggio: vedere manuale d'uso. / Peso para el montaje: según manual. / Pesos de montagem: veja-se as instruções p. uso. / Масса монтируемых частей: см. инструкцию по эксплуатации.

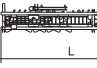
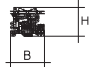
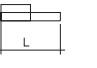
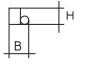
| Kranoberteil | | Upper part of crane / Partie supérieure de grue / Parte superiore della gru Parte superior grúa / Parte superior do guindaste / Верхняя часть крана | L (m) | B (m) | H (m) | kg ¹¹⁾ |
|---|---------------------------------|---|---|--|------------------|-------------------|
| Pos. Item Rep. Voce Pos. Cant. Ref. Cant. Поз. Кол-во | Anz. Qty. Qte. Qta. Cant. Cant. | Drehbühne 24 HC kpl. mit Kugeldrehkranz und KUD-Auflage Slewing platform complete with slewing ring and slewing ring support / Plate-forme tournante complète avec couronne d'orientation et pivot d'orientation / Piattaforma girevole completa di ralla e supporto ralla / Superestructura completa con corona de giro y superficie para corona de giro Plataforma de giro, coroa com rolamentos de esfera e base da coroa giratória / Поворотная платформа в сб. с шариковым опорно-поворотным кругом и рамой ОПУ |  |  | | |
| 1 | 1 | | 2,99 | 2,32 | 2,62 | 16200 |
| 1.1 | 1 | | | | | |
| 2 | 1 | Drehbühne 1000 HC kpl. mit Kugeldrehkranz und KUD-Auflage Slewing platform complete with slewing ring and slewing ring support / Plate-forme tournante complète avec couronne d'orientation et pivot d'orientation / Piattaforma girevole completa di ralla e supporto ralla / Superestructura completa con corona de giro y superficie para corona de giro Plataforma de giro, coroa com rolamentos de esfera e base da coroa giratória / Поворотная платформа в сб. с шариковым опорно-поворотным кругом и рамой ОПУ |  |  | H ^(H) | |
| | | | 3,25 | 3,25 | 3,25 (3,80) | 21700 |

| Pos. Item Rep. Voce Pos. Ref. Поз. | Anz. Qty. Qte. Qta. Cant. Cant. Кол-во | | | | L (m) | B (m) | H (m) | kg ¹¹⁾ |
|--|--|--|----------------------|--|---|--------------|--------------|-------------------|
| 3 | 1 | Kabine mit Podest / Cabin with platform / Cabine avec plate-forme / Cabina con pedana / Cabina con plataforma / Cabina com plataforma / Кабина с площадкой | | | 4,25 | 1,65 | 2,35 | 1150 |
| 4 | 1 | Podest mit Schaltanlage / Platform with switchboard system / Plate-forme avec système de commande / Pianerottolo con impianto di distribuzione / Plataforma con instalación de mando / Plataforma com unidade de controle / Площадка со шкафом управления | | | 4,50 | 1,95 | 2,00 | 2050 |
| 5 | 1 | Turm Spitze / Tower head section / Porte-flèche / Testa porta-braccio / Cabeza de torre / Cabeça de arpaio de lança / Оголовок башни | | | 11,15 | 1,80 | 2,57 | 9200 |
| 6 | 1 | Gegenausleger-Kopfstück / Counter-jib head / Pointe de contre-flèche / Testa di controbraccio / Tramo punta de contrapluma / Cabeça de contra-lança / Концевая секция консоли противовеса | | | 8,50 | 2,35 | 1,20 | 5430 |
| 7 | 1 | Gegenausleger-Anlenkstück / Counter-jib heel section / Pied de contre-flèche / Settore articolato di controbraccio / Tramo primero-contrapluma / Base articulada da contra-lança / Корневая секция консоли противовеса | | | 7,25 | 2,05 | 1,05 | 4020 |
| 8 | 1 | Gegenausleger-Zwischenstück / Intermediate counter-jib section / Élément interm. de contre-flèche / Spezzone di controbraccio / Tramo intermedio de contrapluma / Peça suplementar da contra-lança / Промежуточная секция консоли противовеса | | | 5,25 | 2,45 | 1,10 | 3145 |
| 9 | 1 | Gegenausleger komplett / Complete counter-jib / Contre-flèche complète / Controfreccia completa / Contrapluma completa / Contralança completa / Консоль противовеса в сборе | | | 13,55 | 2,50 | 3,00 | 21030 |
| 10 | 1 | Ausleger-Anlenkstück / Jib heel section / Pied de flèche / Settore articolato di braccio / Pluma tramo primero / Base articulada de lança / Корневая секция стрелы + тележечная лебедка | | | 11,80 | 2,35 | 2,50 | ① 6200 |
| 11 | 1 | Ausleger-Zwischenstück / Intermediate jib section / Élément intermédiaire de flèche / Sezione intermedia braccio / Tramo intermedio pluma / Peça suplementar da lança / Промежуточная секция стрелы | | | 5,45 | 1,80 | 2,30 | ② 2050 |
| 1 | 11,85 | | | | 1,80 | 2,30 | ③ 4220 | |
| 1 | 10,80 | | | | 1,80 | 2,35 | ④ 3440 | |
| 1 | 5,35 | | | | 1,80 | 2,30 | ⑤ 1740 | |
| 1 | 10,35 | | | | 1,80 | 2,30 | ⑥ 2900 | |
| 1 | 11,85 | | | | 1,80 | 2,30 | ⑦ 3400 | |
| 1 | 10,30 | | | | 1,80 | 2,25 | ⑧ 1980 | |
| 1 | 5,30 | | | | 1,80 | 2,25 | ⑨ 730 | |
| 12 | 1 | | | | Ausleger-Kopfstück / Jib head section / Pointe de flèche / Punta braccio / Tramo punta de pluma / Cabeça de lança / Концевая секция стрелы | | | 2,60 |
| 13 | 1 | Laufkatze / Trolley / Chariot de distribution / Carrello / Carrito / Carro de ponte / Грузовая тележка | | | 2,90 | 2,05 | 1,85 | 850 |
| | | | | | 3,25 | 2,05 | 1,85 | 750 |
| 14 | 1 | Lasthaken und Traverse / Hook and cross members / Crochet et traverses / Gancio e traversa / Gancho y tavessa / Gancho e traviesa / Грузовой крюк и траверса | | | 3,50 | 1,80 | 0,50 | 2000 |
| 15 | 1 | Hubwerkseinheit (110 kW) / Hoist gear unit / Treuil de levage / Gruppo meccanismo sollevamento / Mecanismo de elevación / Grupo de mecanismo elevatório / Блок грузовой лебедки | | | 3,15 | 2,15 | 1,55 | 7050 |
| 16 | 1 | Ausleger-Abspannbock / Jib gantry / Chevalet de haubange de flèche / Tirante braccio / Caballete de pluma / Cavalete de lança / Опора расчала стрелы | | | 6,75 | 1,35 | 0,55 | 650 |
| 17 | 1 | Abspannungen / Holding bars / Tirants / Attrezzi di ancoraggio / Tirantes / Peças de ancoragem / Пристежки | | | 7,70 | 2,55 | 0,70 | 5450 |
| Turm | | Tower / Mât / Torre / Torre / Башня | | | | | | |
| 18 | 1 | Kletterturmstück / Climbing tower section / Élément de hissage de mât / Elemento torre di telescopaggio / Tramo de trepado / Tramo de telescopagem / Секция самоподъема | | | 6,30 | 3,40 | 3,35 | 13780 |
| 19 | 1 | Turmstück kletterbar / Climbable tower section / Élément de mât télescopable / Elemento di torre telescopabile / Tramo de torre escalable / Seção da torre ascensionável / Башенная секция с возможностью наращивания | | | 3,40 | 3,35 | 3,35 | 4920 |
| 20 | 1 | Turmstück kletterbar / Climbable tower section / Élément de mât télescopable / Elemento di torre telescopabile / Tramo de torre escalable / Seção da torre ascensionável / Башенная секция с возможностью наращивания | | | 6,30 | 3,35 | 3,35 | 7520 |
| 21 | 1 | Turmstück / Tower section / Élément de mât / Elemento di torre / Tramo torre / Torre / Башенная секция | | | 6,30 | 3,35 | 3,35 | 7380 |
| 22 | 1 | Grundturmstück / Base tower section / Mât de base / Elemento di torre base / Tramo base / Peça de base de torre / Секция основания | | | 12,21 | 3,40 | 3,40 | 15500 |
| 23 | 1 | Grundturmstück / Base tower section / Mât de base / Elemento di torre base / Tramo base / Peça de base de torre / Секция основания | | | 12,21 | 3,40 | 3,40 | 16000 |
| 24 | 1 | Turmstück kletterbar / Climbable tower section / Élément de mât télescopable / Elemento di torre telescopabile / Tramo de torre escalable / Seção da torre ascensionável / Башенная секция с возможностью наращивания | 5,70 m 2,85 m | | 24 HC 1250 TS-0570c 3,43 | 2,44 2,44 | 2,44 2,44 | 9000 5650 |
| 25 | 1 | Turmstück kletterbar / Climbable tower section / Élément de mât télescopable / Elemento di torre telescopabile / Tramo de torre escalable / Seção da torre ascensionável / Башенная секция с возможностью наращивания | 5,70 m 2,85 m | | 24 HC 1000 TS-0570c 3,43 | 2,43 2,43 | 2,43 2,43 | 8600 5450 |

| Pos. Item Rep. Voce Pos. Ref. Поз. | Anz. Qty. Qté. Qta. Cant. Cant. Кол-во | | | | L (m) | B (m) | H (m) | kg ⁽¹⁾ | |
|--|--|--|---|---|--|----------------|--------------|-------------------|----------------|
| 26 | 1 | Kletterturmstück / Climbing tower section Elément de hissage de mât / Elemento torre di telescopaggio / Tramo de torre trepador Tramo de telescopagem / Секция самоподъема |  |  | 24 HC 1000 ECTS-0570 | 6,28 | 2,43 | 2,61 | 9820 |
| 27 | 1 | 2 Träger 2 girders / 2 poutres 2 supporti / 2 vigas 2 suportes / 2 балками |  |  | 24 HC 1000 ECTS-0570 | 3,04 | 1,83 | 1,07 | 4000 |
| 28 | 1 | Turmstück Tower section / Elément de mât / Elemento di torre Tramo torre / Torre / Башенная секция |  |  | 24 HC 1000 TS-1140 24 HC 1250 TS-1140 | 11,98 11,98 | 2,43 2,44 | 2,43 2,44 | 14500 15900 |


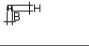

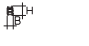

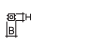

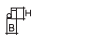

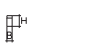
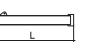
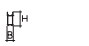
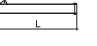
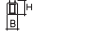


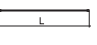

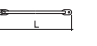
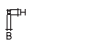
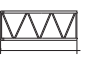
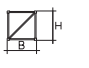
Klettereinrichtung

Climbing equipment / Equipement de télescope / Attrezzatura per allungamento della gru
Equipo de trepado / Acesoários p. subida no edifício / Обойма наращивания

| | | | | | | | | | |
|----|---|--|---|---|------------|----------------|--------------|--------------|----------------|
| 29 | 1 | Führungsstück, geteilt, mit Hydraulikanlage Guide section, split, with hydraulic system Cage télescopique, en plusieurs pièces, avec système hydraulique Elemento guida, diviso, con impianto idraulico Tramo guía, dividido, con sistema hidráulico Elemento guía, dividido, com sistema hidráulico Направляющая секция, составная, с гидроагрегатом | | | 1000 HC | 12,70 12,70 | 2,25 2,25 | 1,90 1,90 | 12950 10805 |
| 30 | 1 | Führungsstück Guide section / Cage télescopique Gabbia di sopraelevazione / Torre de montaje Peça de guia / Направляющая секция |  |  | 24 HC 1000 | 13,54 | 2,47 | 2,09 | 22650 |
| 31 | 1 | Hydraulikanlage und Klettereinrichtung Hydraulic unit and climbing equipment Système hydraulique et équipement de télescope Impianto idraulico e dispositivo di telescopaggio Sistema hidráulico y equipo de trepado Sistema hidraulico e telescopagem Гидроагрегат и обойма наращивания |  |  | 24 HC 1000 | 4,50 | 1,30 | 2,00 | 3700 |

Unterwagen

Undercarriage / Châssis / Carro
Carro con mástil / Carro de guindaste / Опорная рама

| | | | | | | | | | |
|----|---|---|---|---|---------|------|------|------|-------|
| 32 | 4 | Ausgleichsschwinge kurz / Compensating swing beam, short / Coulisse balancier, courte / Bilanciere corto Balancín corto / Пивó curto / Балансир короткий |  |  | 1000 HC | 1,65 | 0,60 | 0,70 | 750 |
| 33 | 4 | Ausgleichsschwinge lang / Compensating swing beam, long / Coulisse balancier, longue / Bilanciere lungo Balancín largo / Пивó comprido / Балансир длинный |  |  | 1000 HC | 2,45 | 0,70 | 1,10 | 1170 |
| 34 | 4 | Schwingen-Hauptlager / Gudgeon / Logement principal du balancier / Cuscinetto principale oscillante / Cojinete oscilante Rolamento oscilante / Основная поворотная опора |  |  | 1000 HC | 1,30 | 0,80 | 0,65 | 1310 |
| 35 | 8 | Fahrschemel mit Antrieb / Rail bogie with drive Bogie moteur / Telaio con gruppo propulsore Caja rodillo motriz / Quadro sem grupo de propulsão Подрамник с приводом |  |  | 1000 HC | 1,45 | 0,85 | 0,75 | 1240 |
| 36 | 4 | Fahrschemel ohne Antrieb / Rail bogie without drive Bogie fou / Telaio senza gruppo propulsore / Caja rodillo conducido / Quadro com grupo de propulsão Подрамник без привода |  |  | 1000 HC | 1,30 | 0,40 | 0,75 | 990 |
| 37 | 2 | Tragholm lang / Long support arm / Longeron long Longherone lungo / Brazo soporte largo / Travessa comprida / Несущая балка, длинная |  |  | 1000 HC | 7,40 | 1,20 | 1,30 | 3510 |
| 38 | 2 | Tragholm kurz / Short support arm / Longeron court Longherone corto / Brazo soporte corto / Travessa curta / Несущая балка, короткая |  |  | 1000 HC | 7,20 | 1,20 | 1,30 | 3240 |
| 39 | 2 | Strebe / Strut Entretoise / Puntone Tirante / Tirante / Распорка |  |  | 1000 HC | 2,75 | 0,60 | 0,10 | 220 |
| 40 | 4 | Randträger / Border support / Traverse Supporti base / Traviesa / Apoio de bordo Стяжная балка |  |  | 1000 HC | 9,00 | 0,35 | 0,20 | 610 |
| 41 | 4 | Stützholm / Support strut / Hauban de châssis Correnti di appoggio / Tirante vertical / Travessa de apoio / Опорный подкос |  |  | 1000 HC | 8,60 | 0,65 | 0,55 | 2060 |
| 42 | 1 | Unterwagen-Turmstück / Undercarriage tower section / Mât de châssis / Elemento di torre del carro Tramo de carro / Peça de torre do chassis Опорная башенная секция |  |  | 1000 HC | 8,75 | 3,40 | 3,40 | 15970 |
| 43 | 1 | Kiste mit Kleinteilen, Seilen / Crate with small parts, ropes Caisse contenant des accessoires, câbles / Cassa con minuteria, funi Caja con piezas pequeñas, cables / Caixa com peças pequenas, cabos Ящик с мелкими деталями, с канатами | | | 1000 HC | 2,00 | 1,00 | 1,00 | 2500 |

⁽¹⁾ Einzelgewichte. / Single weights. / Poids individuels. / Singoli pesi. / Pesos unitarios. / Pesos de peças componentes. / Индивидуальный вес.

Konstruktionsänderungen vorbehalten! / Subject to alterations! / Sous réserves de modifications! / Reservato il diritto di modifiche strutturali! / ¡Sujeto a modificaciones! / Salvo modificação da construação! / Права на внесение конструкторских изменений сохраняются!

Sämtliche Angaben erfolgen ohne Gewähr. / This information is supplied without liability. / Ces renseignements sont sans garantie. / Tutte le indicazioni fornite senza garanzia. / Declinamos toda responsabilidad derivada de la información proporcionada. / Declinamos qualquer responsabilidade quanto à informação fornecida. / Все данные указаны без обязательств.

TCS-001009-LBC-01 • LN 303 - EN 13001 HC1/S2 • BGL C.0.10.1000 • 04.16 / 7

Printed in Germany.